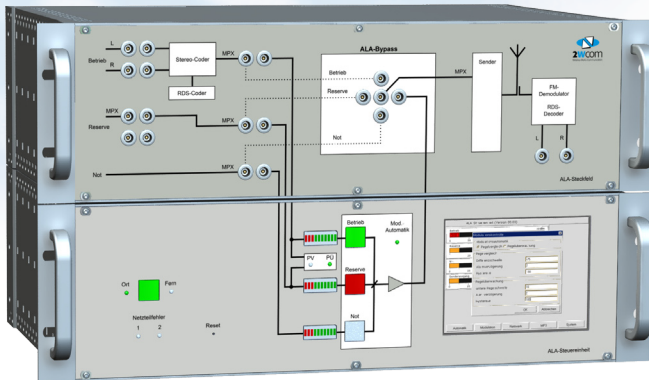


ALA

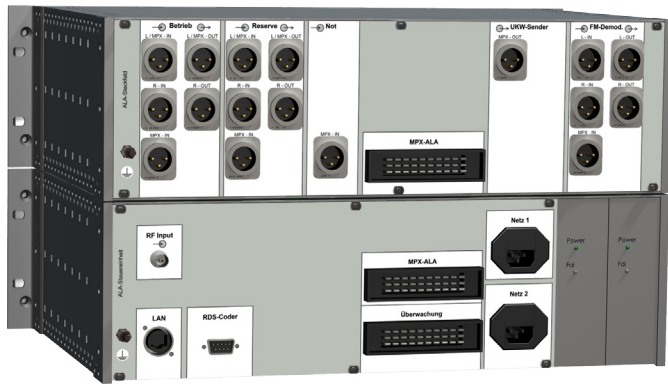
Automatic analysis and selection of the best modulation source for FM-TX



- Level monitoring of different sources
- Automatic analysis and selection of best modulation source
- Balanced connection for all inputs and outputs
- 5,7" TFT color display with touch screen control
- DSP for signal measurement
- Bar graph for quick level control of each input
- MP3 live streaming via TCP/IP
- Two redundant power supplies
- Web-interface for easy configuration and monitoring

The ALA is switched in front of the FM transmitter and does the automatic selection of the best modulation source to guarantee a safe and high quality transmission.

The task of the ALA is to supervise the quality of 2 modulation signals through level comparison and monitoring and if necessary to initiate an automatic redundancy or manual loss switch.



Automatic Line Alternative – Technical Details

Front panel

5,7" TFT color Display,
640 x 480 Pixel
Touch screen user interface
Bar graph with 10 LEDs
Prioritisation switch with
control LED
Bridge connections with
measurement option

Input/Output

Balanced MPX Signal input
and output

XLR connectors male/female	17x
LAN connector RJ45	1x
Power standard connector	2x
Remote control, 9 pole sub-D	1x
Remote control port, 31 pole	1x
Interconnection (case to case)	1x

TCP/IP

Data

Connector
Data format

Controlling and setup functions
MP3 audio streaming
full duplex 10/100 BASE-T
HTTP, SNMP, SMTP, UDP

General data

Power consumption
Case dimension

Weight
Housing
Rated temp. range
Power supply

30VA
19", 3 HU for each case
depth: 310 mm, width: 424 mm,
front panel: 484 mm
3,5 kg each case
Steel plate (aluminium-zinc coated)
+5° to +45°
internal two redundancy units
90...260 V, 47...63 Hz



2Wcom
Wireless-World-Communication

Version: 04.05.2015
These data are subject to
modifications and amendments.
Errors excepted